

**KANSAS**  
**MEDICAL GROUP MANAGEMENT ASSOCIATION**



***MEDICAL PRACTICE***  
***Tech-Knowledge***

**FALL 2001 CONFERENCE**

**September 27-28, 2001**

**CAPITOL PLAZA  
HOTEL**

1717 SW Topeka Blvd.  
Topeka, KS 66612

*AFFILIATED WITH — Medical Group Management Association*





## FEATURED SPEAKERS

### ***Mindi K. McKenna, Ph.D.***

*"How and Why Medical Practices Are Using The Internet" - Thursday, 8:30 a.m.- Shawnee*

Dr. McKenna is an accomplished speaker, consultant, workshop facilitator, author, executive and professor, with twenty years leadership in healthcare, technology and other industries.

As founder and CEO/President of eHealthCoach she leads a privately held corporation that helps healthcare professionals use the Internet in the practice of medicine. The company publishes a monthly print newsletter and maintains an extensive website with information on topics of interest to healthcare professionals such as: finding quality resources on-line; using a website for patient education and marketing; Internet-based disease management; on-line continuing education, recruiting, teambuilding; e-prescribing; mobile computing and communication devices; web-based electronic medical records and practice management systems; speech recognition technology and web-based transcription; digital signatures and encryption; HIPAA compliance; use of application service providers; on-line supply purchasing; on-line eligibility and formulary verification and claims submission.



A member of the Advisory Board for TheDoctorsNote.com on and the Board of Directors of the American Cancer Society, Dr. McKenna's leadership in the healthcare community extends across both commercial and not-for-profit sectors. She serves on the American Academy of Family Physician's Ad Hoc Committee for Electronic Medical Records, The Greater Kansas City Medical Managers' Association Educational Conference Planning Committee, and the Physicians With Heart International Committee. She earned her Ph.D. through the University of Missouri-Kansas City (UMKC) School of Pharmacy in 1992, with an emphasis in healthcare marketing.

She earned her MBA from Webster University in 1984 and her B.A. in Industrial Psychology & Personnel Administration from the University of Kansas in 1980.

### ***Gary Sherrer***

*Lieutenant Governor and Secretary of Commerce and Housing - Thursday, 11:45 a.m.- Emerald I, II, III*

Gary Sherrer was appointed Lieutenant Governor by Governor Bill Graves on July 18, 1996, and was elected to the office in 1998. Sherrer is Kansas' 45th Lieutenant Governor, and on July 21, 2000, he became the longest serving Lieutenant Governor in Kansas history by serving 1,464 days in office.

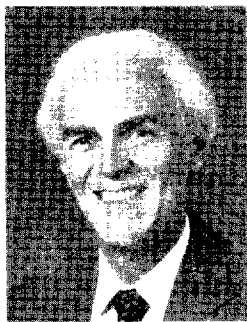
In addition to his duties as Lieutenant Governor, Sherrer also serves as the Secretary of Commerce and Housing. As Secretary, he oversees the agency charged with fostering and promoting economic development and enhancing the availability of affordable housing in Kansas.

As Chairman-Elect of the National Conference of Lieutenant Governors, Lieutenant Governor Sherrer helps lead the professional association which represents the elected officials who are next in line of succession to the governors in the 50 states and five territorial jurisdictions.

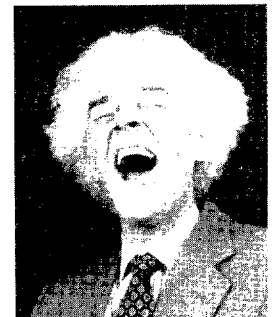
Before beginning work for Governor Graves, Lieutenant Governor Sherrer spent the majority of his career in the financial industry and has always played an active role in the community. He is a founder of the Leadership Kansas Program, and he created Leadership Wichita.

### ***Paul E. McGhee, Ph.D.***

*"Health, Healing and the Amuse System--Humor as Survival Training" - Friday, 9:00 a.m. & 10:45 a.m.- Shawnee*



Paul E. McGhee, Ph.D. is President of The Laughter Remedy for Stress-Prone Health Care Organizations. Paul is a developmental psychologist, and is internationally known for his own pioneering humor research. He has published 11 books on humor, and given talks on humor in 10 countries. His work has been featured on the Discovery Channel, in the New York Times, and in many other magazines and newspapers throughout the U.S. and Europe. His programs are entertaining, and guaranteed to get you laughing, but are always substantive, as well. He is at the cutting edge of the humor in health care movement, showing nurses and other health care staff how to use humor to battle burnout and provide quality care in the midst of change. He also shows patients how to use humor to cope. He is co-creator of SMILE, a software package that enables health care organizations to create and deliver personalized humor intervention programs to patients, nursing home residents, members of support groups, etc.



# KMGMA FALL 2001 CONFERENCE SCHEDULE

## Wednesday, September 26, 2001

6:00 p.m. – 9:00 p.m.	Executive Committee – <i>Bison Room</i>
6:00 p.m. – 11:00 p.m.	Hospitality Reception – <i>Boardroom Suite</i>
7:00 p.m. – 8:00 p.m.	Committees Dinner
7:00 p.m.	Insurance & Legislative Committee – <i>Homestead Room</i>
7:00 p.m.	Human Resources – <i>Wheat Room</i>
8:00 p.m.	Rural Health – <i>River Room</i>
9:00 p.m. – 11:00 p.m.	Exhibitor Setup – <i>Sunflower Ballroom</i>

## Thursday, September 27, 2001

7:00 a.m. – 9:00 a.m.	Members' Registration – <i>Conference Foyer</i>
7:00 a.m. – 8:00 a.m.	Breakfast – <i>Emerald I, II, III</i>
7:00 a.m. – 8:15 a.m.	New Member Orientation and Breakfast – <i>Amber Room</i>
7:00 a.m. – 10:00 a.m.	Exhibitor Setup – <i>Sunflower Ballroom</i>
8:15 a.m. – 8:30 a.m.	Welcome and Announcements – <i>Shawnee</i>
8:30 a.m. – 10:00 a.m.	“How and Why Medical Practices Are Using the Internet” <b>Mindi K. McKenna, Ph.D.</b> – <i>Shawnee</i>
10:00 a.m. – 10:30 a.m.	Break - Exhibits - Drawing – <i>Sunflower Ballroom</i>
10:30 a.m. – 11:45 a.m.	KMGMA Business Meeting (Members Only) – <i>Shawnee</i>
11:45 a.m. – 1:15 p.m.	Lunch – <b>Gary Sherrer, Lieutenant Governor</b> , State of Kansas – <i>Emerald I, II, III</i>
1:15 p.m. – 4:30 p.m.	Educational Tracks A. “Beyond Physician Compensation” <b>Ron L. Vance, J.D.</b> – <i>River Room</i> B. “Building the Internet into a Business Plan” <b>Mindi K. McKenna, Ph.D.</b> – <i>Bison Room</i> C. “Inside the Carrier -- Medicare tour <b>BCBS of Kansas</b> – <i>off site</i> D. “Introduction to Microsoft Office 2000 Access” – <i>off site</i> E. “Intermediate Microsoft Office Excel 2000” – <i>off site</i> F. “Introduction to Microsoft Power Point 2000” – <i>off site</i>
6:00 p.m.	“Game Show Mania” – <i>Emerald Ballroom</i>

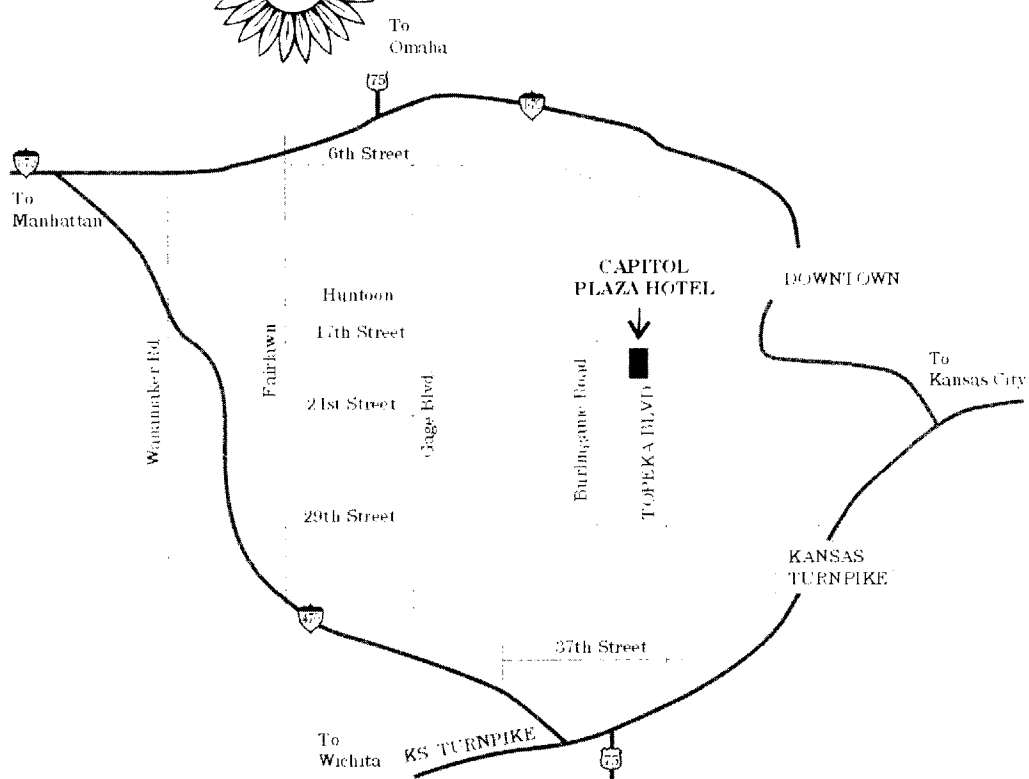
## Friday, September 28, 2001

7:30 a.m. – 8:30 a.m.	Breakfast – <i>Emerald I, II, III</i>
7:30 a.m. – 8:30 a.m.	Past Presidents' Breakfast – <i>Amber Room</i>
8:30 a.m. – 9:00 a.m.	Break – Exhibits – Drawing – <i>Sunflower Ballroom</i>
9:00 a.m. – 10:15 a.m.	“Health, Healing and the Amuse System -- Humor as Survival Training:” <b>Paul E. McGhee</b> – <i>Shawnee</i>
10:15 a.m. – 10:45 a.m.	Break – Exhibits – Drawing – <i>Sunflower Ballroom</i>
10:45 a.m. – 12:00 Noon	“Health, Healing and the Amuse System -- Humor as Survival Training:” <b>Paul E. McGhee</b> – <i>Shawnee</i>
12:00 Noon – 1:30 p.m.	Lunch – <b>Jack Knack, President &amp; CEO of BCBS of Kansas</b> – <i>Emerald I, II, III</i>
1:30 p.m.	Adjournment



# CAPITOL PLAZA HOTEL

1717 SW Topeka Blvd.  
Topeka, KS 66612  
(785) 431-7200  
Fax: (785) 235-0489



If you have questions or comments, please call one of your Officers.

**President** Jinny Freeman  
Imaging for Women  
Leawood, KS  
(913) 724-8603

**2nd Vice President** Jo Marsh  
Associates in Women's Health  
Wichita, KS  
(316) 685-3822, ext. 223

**President Elect** Ann Buess, CPA, CMA  
Wichita Clinic, PA  
Wichita, KS  
(316) 689-9353

**Secretary** Terry Freeman  
Medical Services Corp.  
1938 N. Woodlawn #411  
Wichita, KS  
(316) 681-3425

**1st Vice President** Lynn Adams  
Medical Business Resources, Inc.  
Hays, KS  
(785) 650-1102

**Treasurer** Dave Gordon, CPA  
Hillside Medical Office  
Wichita, KS  
(316) 685-1381



**KANSAS**  
MEDICAL GROUP MANAGEMENT ASSOCIATION